



# VOLUNTEERS!

**HOWDY**, we are so glad that you have decided to volunteer with us! All volunteers are **required** to sign and submit a Volunteer's Contract + Waiver Form **prior to arrival** at BUILD's construction site.

Please follow the instructions below:

- 1 - Go to [maroonlink.tamu.edu](http://maroonlink.tamu.edu)
- 2 - Sign in with your **TAMU Net ID and password**
- 3 - Search for **BUILD Command Team** on the top right corner
- 4 - Click on **BUILD Command Team home page**
- 5 - Click on **Documents tab**
- 6 - Select **Department/Orgs Documents** from the drop down list
- 7 - Download "**BUILD 2015 Volunteers Contract**" + "**BUILD 2015 Waiver (UIN)**"
- 8 - **Fill Out** Documents:

-At the top of the Waiver Form, **ignore** the Account Number blank. On the Volunteer's Contract, **type your UIN in the "Signtaure" box.**

-Please **save** and **rename** your documents as "**BUILD\_2015\_Volunteers\_Contract (FIRST LAST NAME)**" and "**2015\_BUILD\_Waiver (FIRST LAST NAME)**"

Once these documents have been filled out completely:

- 9 - **Go** back to BUILD Command Team page (on MaroonLink)
- 10 - Click on **Forms Tab**
- 11 - Click on "**BUILD Construction**"
- 12 - Upload your Volunteer's Contract + Waiver in the **boxes provided.**
- 13 - Click **Next**, then Click **Submit for Approval**

## LOCATION

-BUILD Site next to Lot 88 on Agronomy Rd.

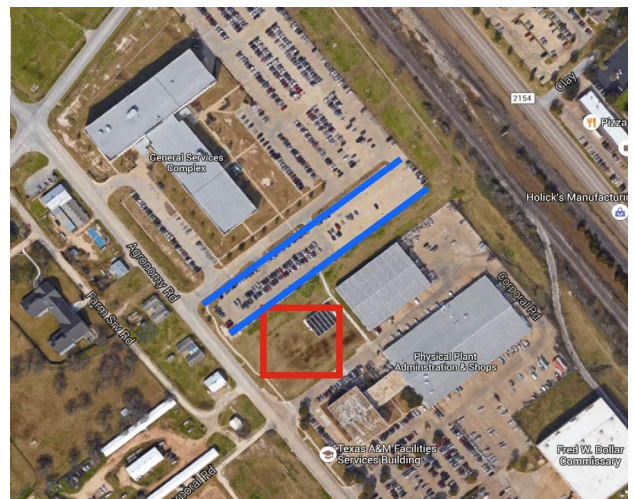
## DATES & TIMES

-Site OPENS September 28 - November 6  
Monday - Friday, 8:00am - 5:00pm

## PARKING & TRANSPORTATION

Valid TAMU Permits may park in Lot 88!

Ride Bus 06 "12th Man" and get off at  
"Facilities Services" or "GSC"



Upon arrival to the site, **stop at the BUILD Check-In Desk** and hand your **Student ID to BUILD Command Team Member for swipe in** and follow her/his directions.

Make sure to **sign out** once you have completed your volunteer shift! THANKS AND GIG'EM!